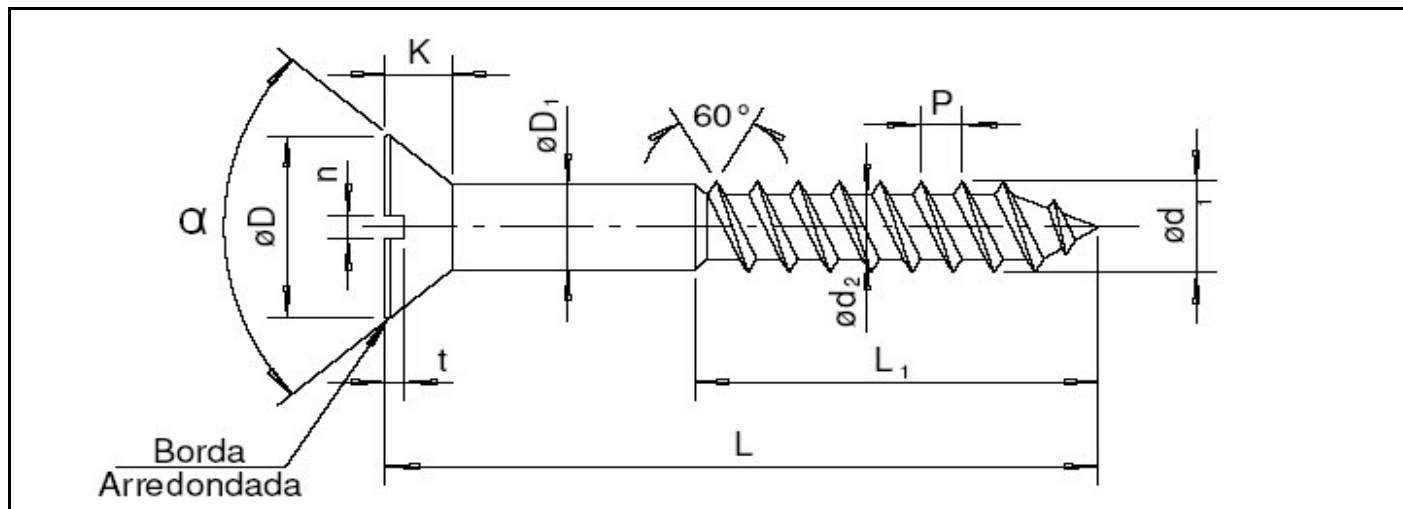


## Paraf. Madeira Rosca Soberba



DIAM. NOMINAL		2,2	2,5	2,8	3,2	3,5	3,8	4,2	4,5	4,8	5,5	6,1
<b>F.P.P</b>		26	24	22	20	18	16	15	14	13	11	10
<b>D</b>	min.	4.00	4.60	5.20	5.90	6.50	7.20	7.80	8.50	9.10	10.40	12.10
	max.	4.40	5.00	5.70	6.40	7.10	7.70	8.40	9.10	9.70	11.10	12.50
<b>D1</b>	min.	2,13	2,35	2,65	3,05	3,35	3,65	4,05	4,35	4,65	5,32	5,88
	max.	2,15	2,45	2,75	3,15	3,45	3,75	4,15	4,45	4,75	5,45	6,00
<b>α</b>	min.	80°	80°	80°	80°	80°	80°	80°	80°	80°	80°	80°
	max.	82°	82°	82°	82°	82°	82°	82°	82°	82°	82°	82°
<b>k</b>	Ref.	1.20	1.50	1.70	1.90	2.10	2.30	2.50	2.70	2.90	3.30	3.70
<b>r</b>	max.	1.10	1.40	1.50	1.70	1.90	2.40	1.70	1.90	2.40	2.40	1.40
<b>N</b>	min.	0.70	0.80	0.90	1.00	1.10	1.10	1.20	1.30	1.40	1.60	1.80
	max.	0.80	0.90	1.00	1.20	1.30	1.30	1.40	1.50	1.60	1.80	2.00
<b>T</b>	min.	0.50	0.70	0.80	0.90	1.00	1.00	1.10	1.20	1.30	1.50	1.70
	max.	0.70	0.90	1.00	1.10	1.20	1.20	1.30	1.40	1.50	1.70	1.90

### COMPRIIMENTO DE ESTAMPAGEM

$L = \text{Nominal} + 0,20$

L		até 25mm	40	40	45	50	75	75	100	100	100
<b>L1</b>	min.	Rosca Inteira	26.04	26.04	29.88	29.88	49.95	49.95	66.00	66.00	66.00
	max.		26.66	26.66	30.25	30.25	50.08	50.08	66.66	66.66	66.66

Comprimento L (mm)	PESO APROXIMADO DE 1000 PEÇAS EM KILOS											
10.00		0.310	0.410									
12.00		0.340	0.480	0.580	0.780	0.930						
16.00		0.440	0.580	0.680	0.940	1.100	1.320	1.730				
20.00		0.550	0.700	0.840	1.100	1.340	1.450	1.870	2.120	3.100		
22.00		0.660	0.780	0.900	1.280	1.510	1.680	2.040	2.320	3.320		
25.00		0.770	0.900	1.080	1.390	1.700	1.900	2.420	2.680	3.620	5.140	
30.00			1.050	1.400	1.780	2.100	2.520	3.080	3.500	4.300	6.420	
40.00			1.260	1.720	2.140	2.480	2.880	3.620	4.100	5.380	7.120	
45.00					2.560	2.900	3.500	4.220	4.720	6.220	7.920	
50.00						3.260	3.900	4.700	5.220	7.010	9.520	
55.00							4.460	5.220	6.120	7.660	9.960	
65.00								5.030	5.920	6.700	8.620	11.150
75.00								5.990	6.980	8.680	10.200	13.420
90.00									9.450	12.220	15.120	
100.00										10.650	13.820	18.220